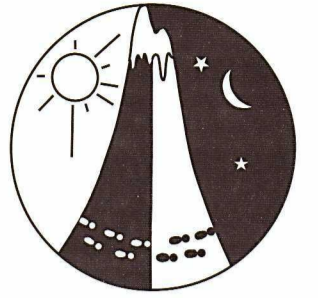


# The Hotham Handicap

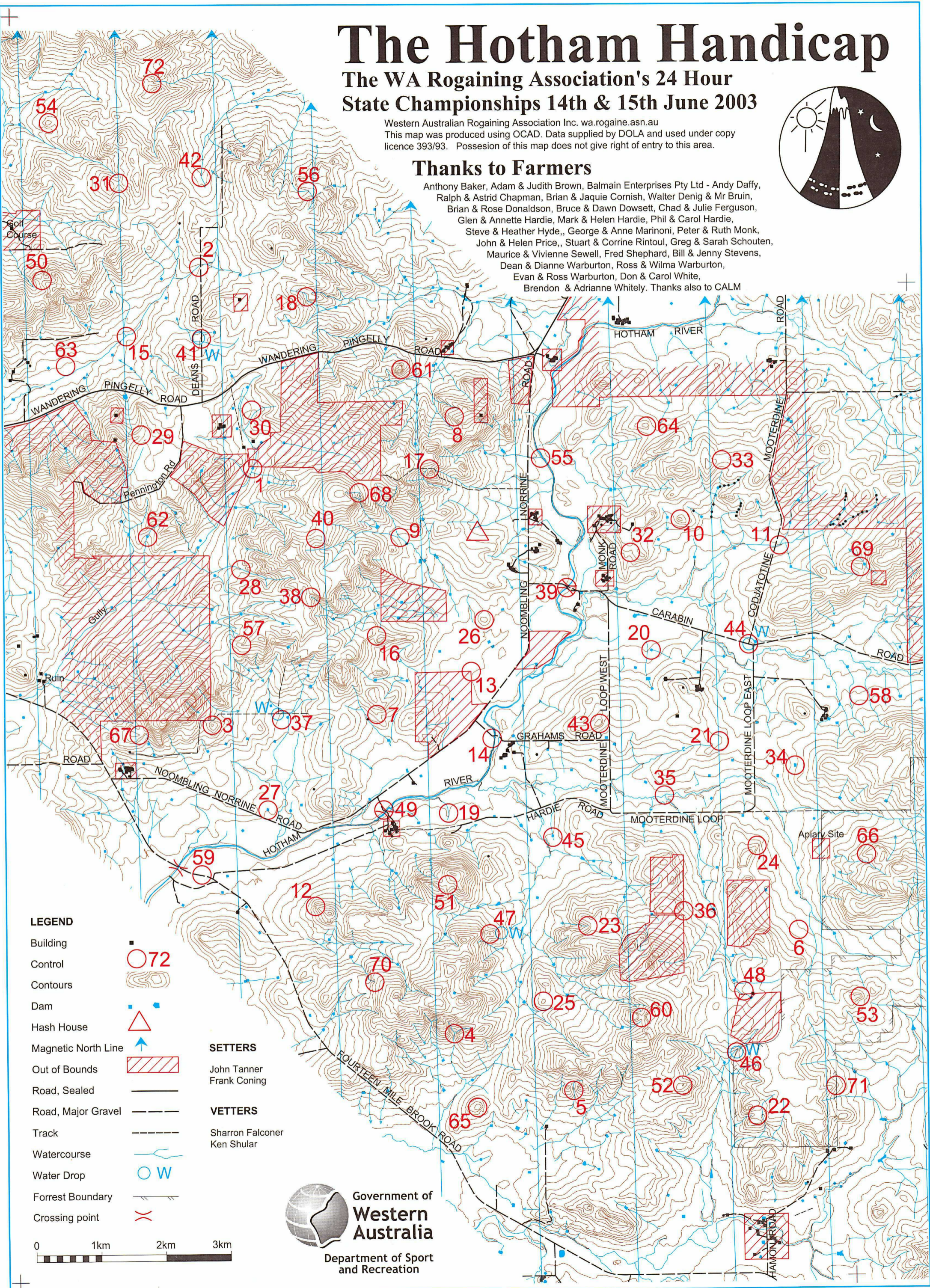
The WA Rogaining Association's 24 Hour  
State Championships 14th & 15th June 2003

Western Australian Rogaining Association Inc. wa.rogaine.asn.au  
This map was produced using OCAD. Data supplied by DOLA and used under copy  
licence 393/93. Possession of this map does not give right of entry to this area.



## Thanks to Farmers

Anthony Baker, Adam & Judith Brown, Balmain Enterprises Pty Ltd - Andy Daffy,  
Ralph & Astrid Chapman, Brian & Jaquie Cornish, Walter Denig & Mr Bruin,  
Brian & Rose Donaldson, Bruce & Dawn Dowsett, Chad & Julie Ferguson,  
Glen & Annette Hardie, Mark & Helen Hardie, Phil & Carol Hardie,  
Steve & Heather Hyde, George & Anne Marinoni, Peter & Ruth Monk,  
John & Helen Price, Stuart & Corrine Rintoul, Greg & Sarah Schouten,  
Maurice & Vivienne Sewell, Fred Shephard, Bill & Jenny Stevens,  
Dean & Dianne Warburton, Ross & Wilma Warburton,  
Evan & Ross Warburton, Don & Carol White,  
Brendon & Adrienne Whitely. Thanks also to CALM



### LEGEND

- Building
- Control
- Contours
- Dam
- Hash House
- Magnetic North Line
- Out of Bounds
- Road, Sealed
- Road, Major Gravel
- Track
- Watercourse
- Water Drop
- Forrest Boundary
- Crossing point

### SETTERS

John Tanner  
Frank Coning

### VETTERS

Sharron Falconer  
Ken Shular



Government of  
**Western  
Australia**

Department of Sport  
and Recreation

# The Hotham Handicap WARA 24 hr State Championships 14 & 15 June 2003

No.	Description	Points	No.	Description	Points	Important
1	The dam - SE corner	20	37	On a eucalypt - NE corner small pine plot	60	<b>Information</b>
2	The watercourse	20	38	Head of the water course	60	
3	The knoll	20	39	Old Smithy's crossing	60	<b>Control Cards</b> From 1130 Saturday
4	The watercourse junction - 20m N	20	40	The spur	60	
5	In the gully	20	41	The road / fence intersection 50m @ 330 deg	60	<b>Briefing</b> 1150 Saturday
6	A fence/ old railway formation intersection 7m north <i>E. FENCE NEAR</i>	20	42	A watercourse junction	60	
			43	The knoll east side	60	<b>Start</b> 1200 Saturday
7	A small rocky knoll	30	44	The road intersection - 45m @ 20 deg	60	
8	The spur	30	45	A windmill	60	<b>Finish</b> 1200 Sunday
9	The watercourse junction	30	46	A fence/ track intersection - 10m @ 80 deg	60	
10	The knoll	30	47	The knoll	60	<b>Hash House</b> Opens at 1600 Sat Closes about 1330 Sun
11	The water course junction	30	48	A small rocky knoll - N side	60	
12	The spur - SW side	30				<b>Sunset</b> - Saturday 1718
			49	Glen's crossing - NW of foot bridge - one at a time on the bridge if high water	70	
13	The fence corner	40	50	The saddle	70	<b>Sunrise</b> - Sunday 0714
14	Graham's crossing - a fence corner	40	51	The saddle - 45m @ 20 deg <i>EMU NEAR 150 NE</i>	70	
15	The water course junction	40	52	The knoll	70	<b>Moonrise</b> - Saturday 1703
16	The saddle - 50m @ 220 deg	40	53	The spur	70	
17	The saddle - south side	40	54	The knoll	70	<b>Moonset</b> - Sunday 0800
18	A small dam wall - east side	40				
19	An old rail formation/watercourse crossing 20m @ 230 deg <i>RUBBISH</i>	40	55	In the watercourse beside the old tank	80	<b>Late Penalty</b> 10 points per minute or part minute
20	The dam - SW corner <i>300m S</i>	40	56	The watercourse bend	80	
21	A fence intersection - 25m @ 175	40	57	The spur	80	<b>Controls Used</b> 72
22	The saddle	40	58	A power pole	80	
23	Head of the water course <i>ROCK SURFACE TO WEST</i>	40	59	An old railway formation	80	<b>Total Points</b> 4140
24	The spur	40	60	The saddle - 20m @ 310 deg	80	
25	The knoll	50	61	The spur	90	
26	The summit	50	62	The dam - west corner	90	
27	The dam - 50m @ 350deg	50	63	A grove of Wandoo - east side	90	
28	A watercourse junction	50	64	The knoll	90	
29	The spur <i>WINDY TO NE</i>	50	65	The summit - NE side	90	
30	The saddle - 60m @ 200 deg	50	66	The spur	90	
31	The saddle	50				
32	Head of the gully <i>(RUBBISH TIP 80M WNW</i>	50	67	The rocky spur (the "skull") <i>ROCK SURFACE TO EAST</i>	100	
33	The saddle <i>CAREASS FENCE 120M NNE</i>	50	68	The bend in the watercourse	100	
34	The dam - NW side	50	69	The knoll <i>MINESHAFT NEAR</i>	100	
35	The water course junction	50	70	Head of the gully	100	
36	A fence/watercourse intersection 15m @ 205 deg	50	71	The spur - a fence intersection 15m @ 320	100	
			72	Head of the watercourse	100	
<b>Patrolled Roads:</b> Wandering/Pingelly, Noombling/Norrine, Carabin, Mooterdine Loop East, Mooterdine Loop & Fourteen Mile Brook				<b>Water Drops:</b> At or near controls 37, 41, 44, 46, 47		